



### IIPA Certification Ready Iridology

Class 1 ~ Introduction, Terms and Basics  
 Class 2 ~ Anatomy of the Eye and Zones  
 Class 3 ~ Collarette  
 Class 4 ~ Constitutional Types By Color and Structure  
 Class 5 ~ Pigmentation  
 Class 6 ~ Lacunea  
 Class 7 ~ Iridology Syndromes  
 Class 8 ~ Pupil Tonis  
 Class 9 ~ Sclerology  
 Class 10 ~ Mock consultations  
 Class 11 ~ Mock consultations  
 Class 12 ~ One on One Review

One on one - consists of :

- Questions/ answers
- Sessions
- Reviewing quizzes
- Mock or real consultations

MarysHerbs.com

### Disclaimer

This webinar is not to be used instead of going to a competent doctor. I do not direct(ly) nor indirectly dispense medical advice nor prescribe in any way alternative treatment.

In the event you use this information, which is only of historical value, you are prescribing for yourself which is still your constitutional right. I assume no responsibility.

I am independent in my attempt to educate the public. Although I do endorse some top quality products, I receive no financial support from any health or herb company for producing and sharing this information.

I also believe it is a crime that we have to pussy foot around the truth because there is a law that says that I cannot declare what changing your lifestyle and diet can do for your health, but I love this great country and will do my best to try to obey their law, even if I strongly disagree with them..

Natural health works slowly. I suggest that you do not stop medication without guidance of a doctor. I say this not only because it is the law, but because I BELIEVE STOPPING MEDICATION WITHOUT THE GUIDANCE OF A DOCTOR IS UNWISE AND DANGEROUS.

If you would like to make healthier changes in my diet and my doctor was not willing to help you while you work with a natural health practitioner, I suggest you find a doctor who values and respects his patient's rights and fire the doctor who would not!

MarysHerbs.com

### Iris Signs that Indicate Kidney Functions

Subtype by color: Uric Acid

Lacunae: Reaction Field  
Shoe Lacuna

Pupil Tonis: Inferior  
Medial Lumbar

### Lacuna vs Pigmentation

A Lacuna is a disruption of the fibers of the iris. It indicates weakness that needs nourishment to repair.

Pigmentation is something on top of the fibers of the iris. It indicates toxins which need cleaned out. The color gives a hint as to what organ allowed the toxins to settle in the body.

Build

Cleanse

MarysHerbs.com

### Main Constitutional Type

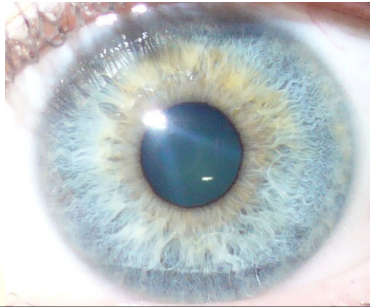
Iridologists have noticed a correlation between certain Iris patterns and health conditions

There are main iris types:

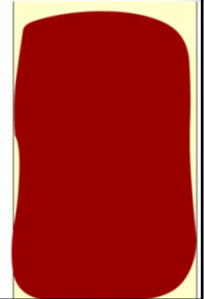
Lymphatic Blue	Mixed Biliary Mixed	Hematogenic Brown
<p>Lymphatic</p> <p>DENSITY and RESILIENCE</p> <p>SUBTYPES By Color</p> <p>Over acid, Fatigue, Hypoglycemia, Uric acid, Acidosis</p>	<p>Mix Biliary</p> <p>DENSITY and RESILIENCE</p> <p>SUBTYPES By Color</p> <p>Fatigue, Acidosis, Hypoglycemia</p>	<p>Hematogenic</p> <p>DENSITY and RESILIENCE</p> <p>SUBTYPES By Color</p> <p>Diabetes, Acidosis</p>

### Lymphatic

Lymphatic – stringy fibers visible on the stroma. Trabeculae – (one fiber in the Iris) makes up the resilience subtypes.



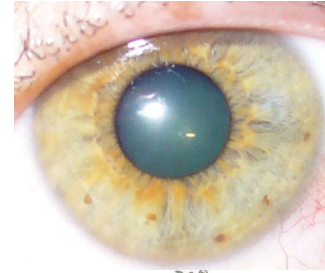
Some Pigment (formerly known as Psora) Look Like the Whole Iris Has Been Spray Painted



Some Pigment Look as if They Were Flicked From a Paint Brush



### Uric Acid and Liver Pigmentation

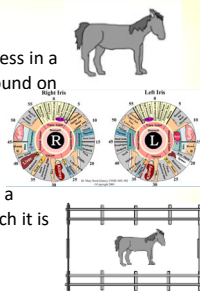


MarysHerbs.com

### Important to Note

- Topolabile – Sign or pigment which indicates weakness in a specific organ regardless of the area of which it is found on the chart. For example: Shoe Lacuna or yellow pigmentation such as uric acid - kidney.
- Topostabile – Pigment deposits or Lacunae found in a specific part of the chart indicating the place of which it is weak.

Signs can be topolabile, topostabile, or both.



MarysHerbs.com

### Pigmentation

Density – Resilience – structural strength and integrity

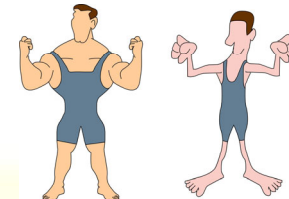
Shading – Reactivity – vital force - difference between light and dark shows the amount of vitality and its ability to react to negative energy or dispel toxins

Toxins tend to settle in the area of the body with lower vitality.

Signs can be topolabile, topostabile, or both.

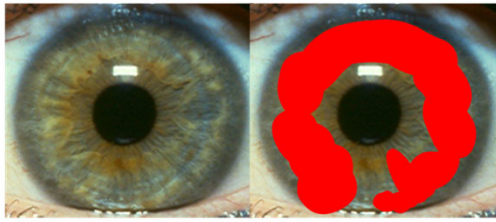
If you had to squirt toxins on one of these two guys, which would you choose?

Chances are the strong guy could push you away, while the weaker guy might not be able to.



Now replace the guys with organs, glands or tissue. Where will toxins likely settle? In the weaker areas which cannot force them out.

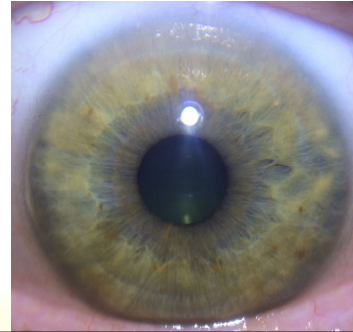
Yellow Indicates Kidneys are Unable to Manage  
Uric Acid Found/Produced in the Body



MarysHerbs.com

### Uric Acid Diathesis Sub-type ~ Poor Kidney Function

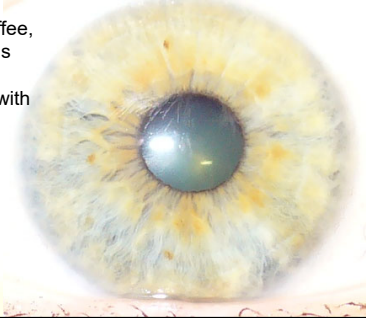
Diathesis means - a tendency to suffer from a particular medical condition.



Uric Acid Typically Manifests the same Symptoms as Over-Acid.  
Gout is an additional Symptom

### Yellow Indicates Poor Kidney Function

Cutting out Coffee, Tea and Soda is **Hugely** helpful when working with Uric Acid Problems.



The number one nutrient needed by the kidneys is good water.

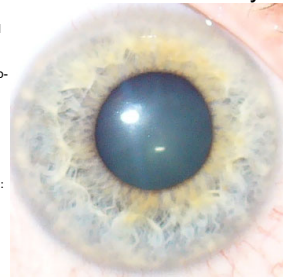
Some say up to ½ of your body weight in ounces not to exceed 100 ounces.

### Yellow Indicates Poor Kidney Function

Uric acid can cause gout and kidney stones.

Often Uric Acid Diathesis Sub-type also has a tendency towards Edema and Swollen glands.

Foods that nourish kidney include:  
Cucumbers  
Dandelion  
Cherries

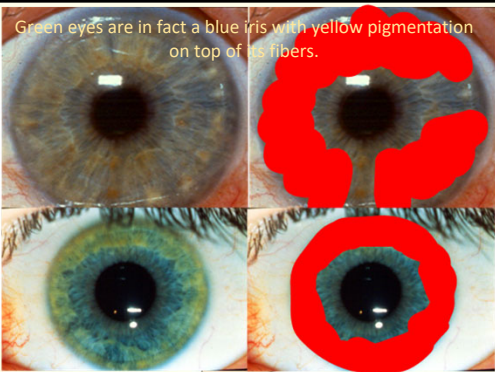


Note: The person can have an over acid sub-type eye but be alkaline.

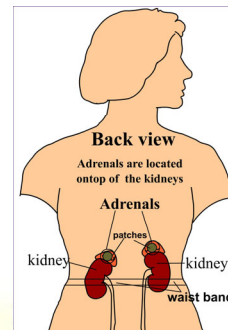
The only way to know how to proceed is to take saliva and urine pH

MarysHerbs.com

Green eyes are in fact a blue iris with yellow pigmentation on top of its fibers.



### Iris Signs Which Indicates Kidney Function



Lacuna: Shoe Lacuna Reaction Field

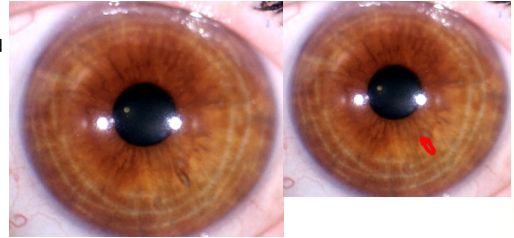
### Shoe Lacuna - Topolabile



MarysHerbs.com

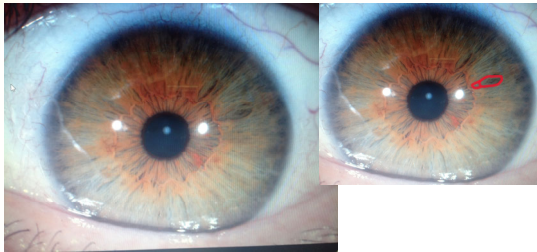
### Shoe Lacuna in a Biliary Iris

Even if the shoe Lacuna is not located in the kidney reaction field, it indicates kidney involvement



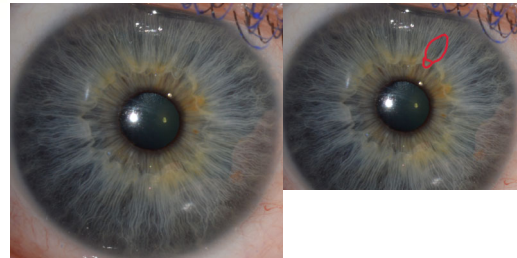
MarysHerbs.com

### Shoe Lacuna



MarysHerbs.com

### Shoe Lacuna



MarysHerbs.com

### Shoe Lacuna

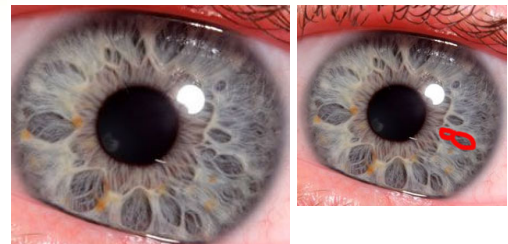
Topolabile – Sign which indicates weakness in a specific organ regardless of the area of which it is found on the chart.

A small and a large lacuna which together make up the shape of a shoe. No matter where it is located, it indicates a kidney weakness. Also check the topostabile organ or gland as well.

Double concerning if the Shoe Lacuna is topostabile on the kidney.

MarysHerbs.com

### Shoe Lacuna

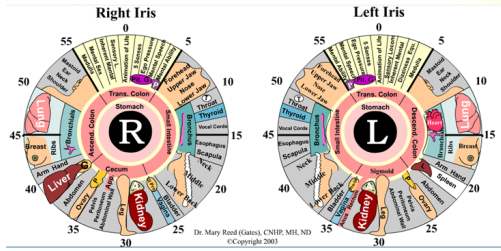


MarysHerbs.com



### Learner's Chart

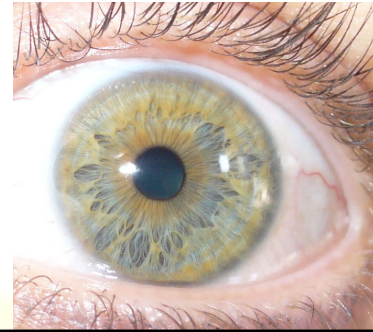
Topostabile –  
Pigment  
deposits or  
**Lacuna** found  
in a specific  
part of the  
chart  
indicating the  
place of which  
it is weak.



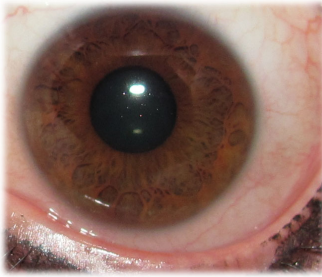
[www.benardjensen.com](http://www.benardjensen.com)  
<https://www.myinfiniteiris.com>

MarysHerbs.com

### Uric Acid and Kidney Lacuna



### Kidney Lacuna in a Biliary Iris



MarysHerbs.com

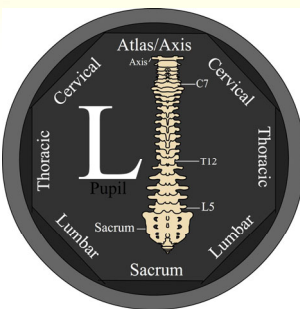
### Perifocal

Topostabile – found in a  
specific part of the chart  
indicating the place of which it  
is weak.

Looks like a white peripheral  
band highlighting a lacuna,  
indicating long standing  
inflammation.



MarysHerbs.com

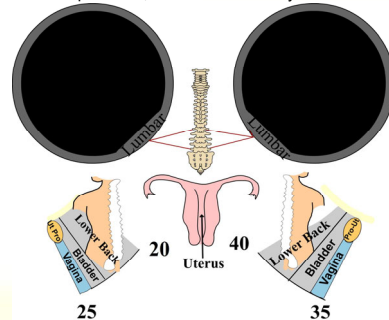


The pupil can indicate  
subluxations  
(misalignments) of the  
spine.

When there is a flattening  
of the pupil, it indicates that  
there is a disturbance in  
the iris area adjacent to it  
on the chart. This  
indicates the nerves  
coming from between the  
vertebrae are not supplying  
proper nerve stimulation to  
those areas.

MarysHerbs.com

Inferior (ventral – lower), Medial (nasal – inside) Lumbar: Mid-body  
issues such as: pancreas, adrenals and kidneys. Possible edema.





### Symptoms of a pH Imbalance

- ROBS calcium from the bones
- ROBS sodium from the joints, esophagus, intestine and gallbladder
- ELIMINATES through kidneys, lungs, skin and bowel
- DEPOSITS acid in the joints
- WATERS it down with mucus
- PROTECTS with cholesterol
- PREVENTS absorption of nutrients

Osteoporosis, arthritis, fibromyalgia, sinus problems, plaque in arteries, colitis, IBS, Crohn's, cancer, gallstones, malabsorption of nutrients

 MarysHerbs.com

