



Disclaimer

This webinar is not to be used instead of going to a competent doctor. I do not directly nor indirectly dispense medical advice nor prescribe in any way alternative treatment.

In the event you use this information, which is only of historical value, you are prescribing for yourself which is still your constitutional right. I assume no responsibility.

I am independent in my attempt to educate the public. Although I do endorse some top quality products, I receive no financial support from any health or herb company for producing and sharing this information.

I also believe it is a crime that we have to pussy foot around the truth because there is a law that says that I cannot declare what changing your lifestyle and diet can do for your health, but I love this great country and will do my best to try to obey their law, even if I strongly disagree with them..

Natural health works slowly. I suggest that you do not stop medication without guidance of a doctor. I say this not only because it is the law, but because I BELIEVE STOPPING MEDICATION WITHOUT THE GUIDANCE OF A DOCTOR IS UNWISE AND DANGEROUS.

If you would like to make healthier changes in my diet and my doctor was not willing to help you while you work with a natural health practitioner, I suggest you find a doctor who values and respects his patient's rights and fire the doctor who would not!

MarysHerbs.com

vogt's limbal girdle – Aluminum out of solution



Lymph VS Cholesterol

4. Lines Pointing toward Iris (of various configurations)

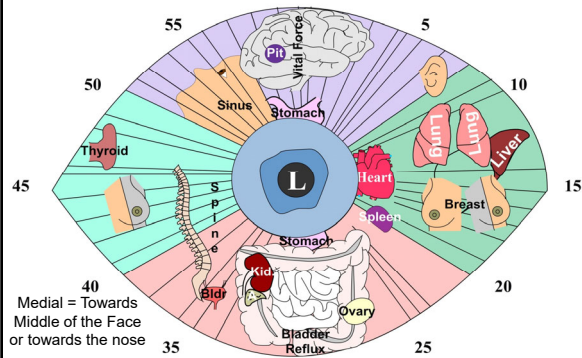
Shows in either eye and positions

- Position
- Proximity
- Prominence
- Shape

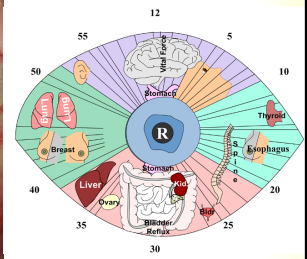
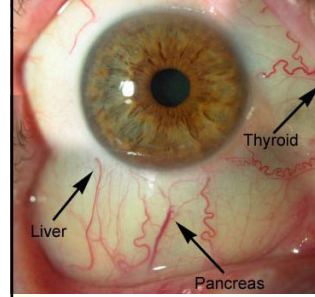
Proximity - Add +1
Prominence - Add +1
Shape (torturous) - Add +1
Simple fermentation – Add +.5

MarysHerbs.com

Determine where the Line is basically heading

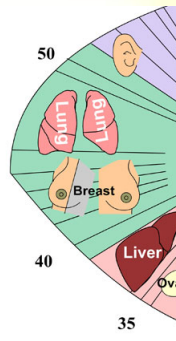


Where are the lines heading?



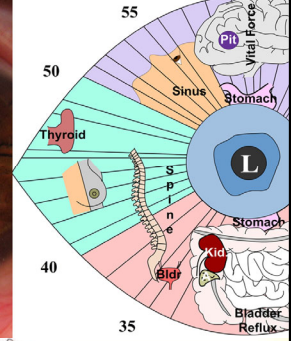
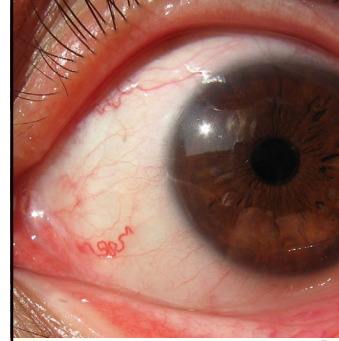
MarysHerbs.com

Where are the lines heading?



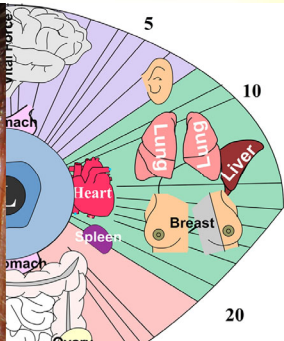
MarysHerbs.com

Where are the lines heading?



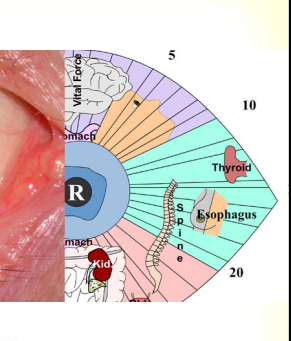
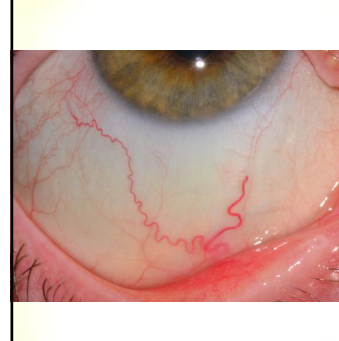
MarysHerbs.com

Where are the lines heading?



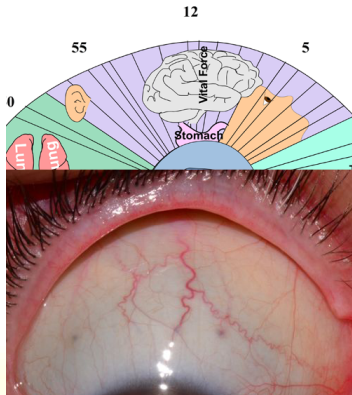
MarysHerbs.com

Where are the lines heading?



MarysHerbs.com

Where are the lines heading?



4. Lines Pointing toward Iris (of various configurations)

Shows in either eye and positions

a. Position

b. Proximity

c. Prominence

d. Shape

Proximity - Add +1

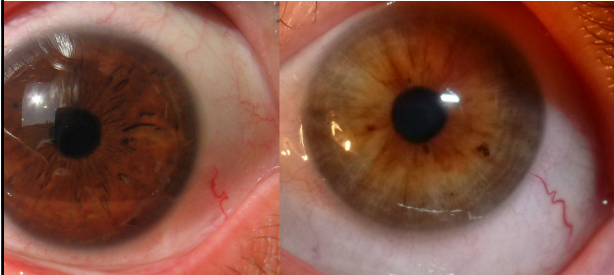
Prominence - Add +1

Shape (torturous) - Add +1

Simple fermentation - Add +.5

MarysHerbs.com

The Closer to the Iris ~ The More
Serious the Problem



The line at 4:00 in each eye, but since the line on the picture on the right is closer, it would indicate priority more so than the one in the left eye

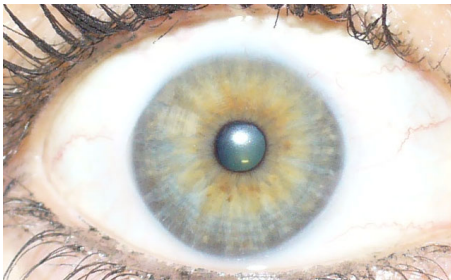
MarysHerbs.com

The Closer to the Iris ~ The More
Serious the Problem



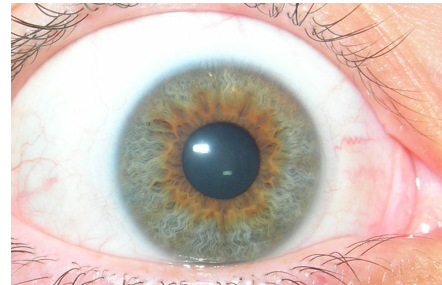
MarysHerbs.com

The Closer to the Iris ~ The More
Serious the Problem

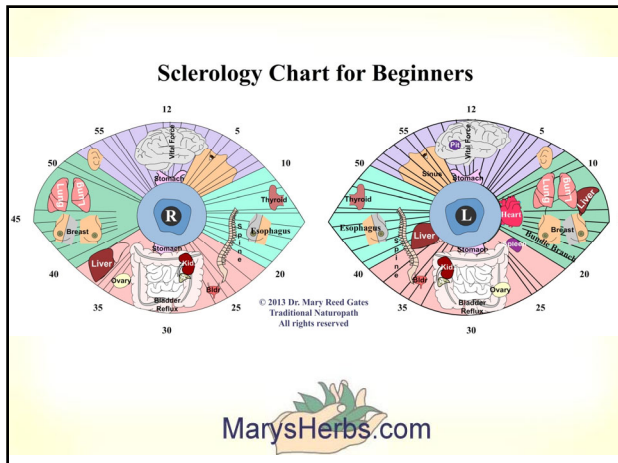


MarysHerbs.com

The Closer to the Iris ~ The More
Serious the Problem



MarysHerbs.com



4. Lines Pointing toward Iris (of various configurations)

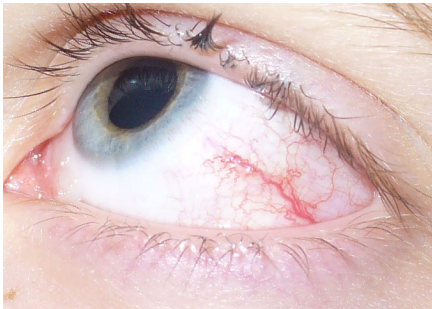
Shows in either eye and positions

- Position
- Proximity
- Prominence
- Shape

Proximity - Add +1
Prominence - Add +1
Shape (torturous) - Add +1
Simple fermentation - Add +.5

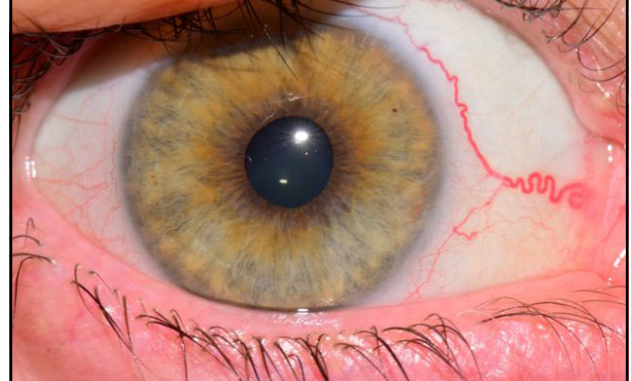
MarysHerbs.com

The Thicker and More Prominent the Line
the More Profound the Condition

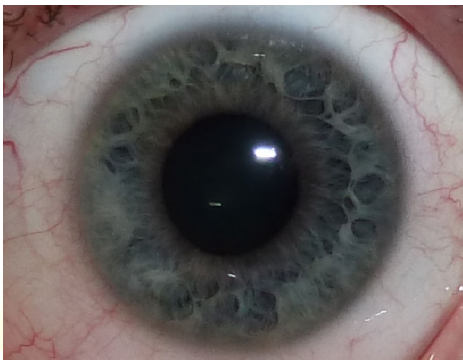


MarysHerbs.com

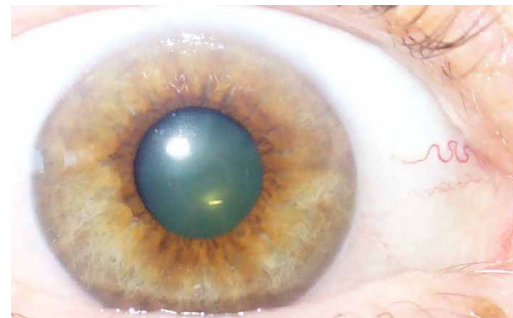
The Thicker and More Prominent the Line
the More Profound the Condition



The Thicker and More Prominent the Line
the More Profound the Condition



The Thicker and More Prominent the Line
the More Profound the Condition



MarysHerbs.com

4. Lines Pointing toward Iris

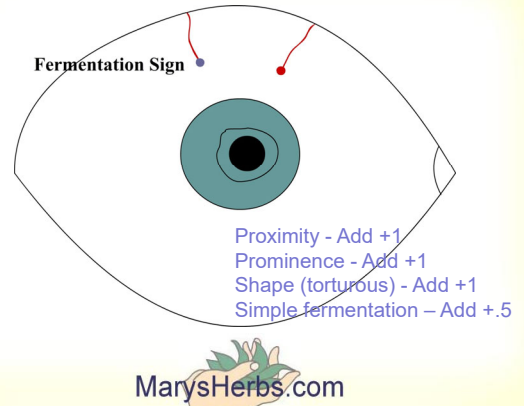
(of various configurations)

- a. Position
 - b. Proximity
 - c. Prominence
- Shows in either eye and positions

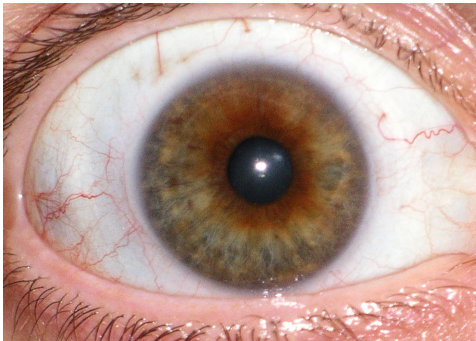
d. Shape

- Fermentation
- Infection Pocket
- Toxic Lines
- Allergy Net
- Abnormal Tissue
- Blood Pressure Loop
- Encapsulation
- Healing Hook
- Healing Lines
- Saw tooth

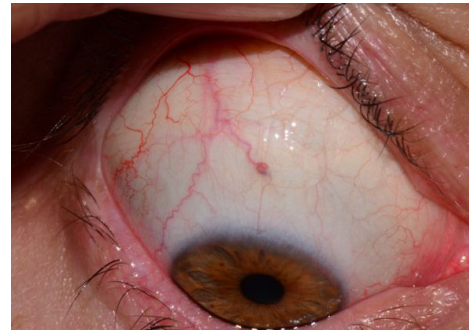
Fermenting ~ Possibly Yeast Overgrowth



Fermentation



Fermentation



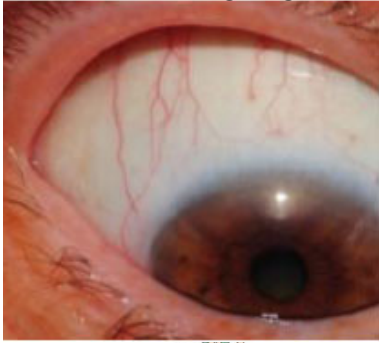
Fermentation



Fermentation

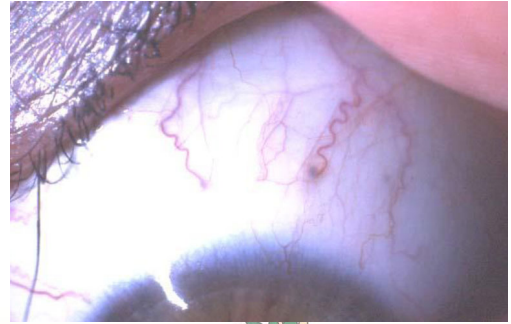


Fermenting Sign



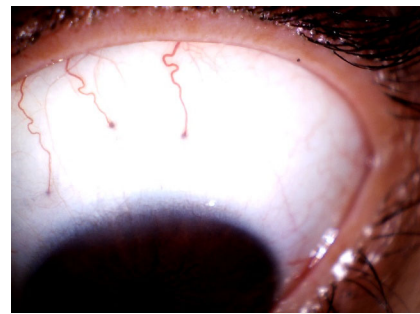
MarysHerbs.com

Fermenting Sign



MarysHerbs.com

Fermenting Sign



4. Lines Pointing toward Iris

(of various configurations)

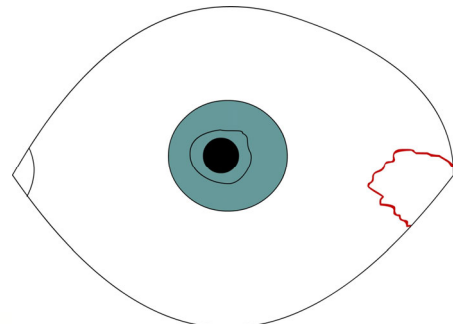
- a. Position
b. Proximity
c. Prominence
- Shows in either eye and positions

d. Shape

- Fermentation
- Infection Pocket
- Toxic Lines
- Allergy Net
- Abnormal Tissue
- Blood Pressure Drop
- Encapsulation
- Healing Hook
- Healing Lines
- Saw tooth

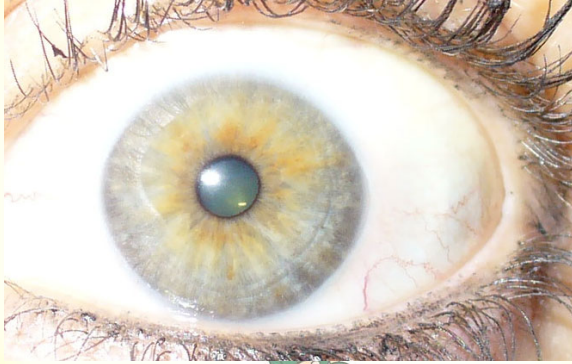
MarysHerbs.com

Infection Pocket



MarysHerbs.com

Infection Pocket



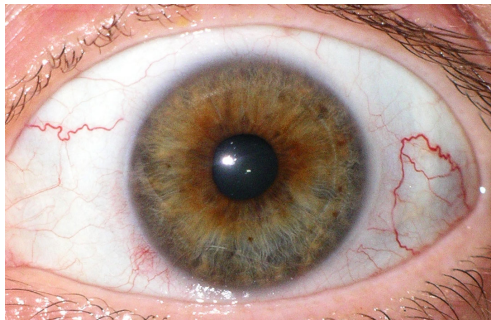
MarysHerbs.com

Infection Pockets



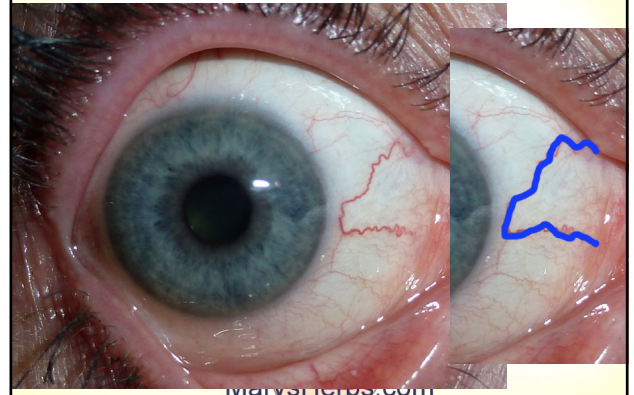
MarysHerbs.com

Infection Pocket



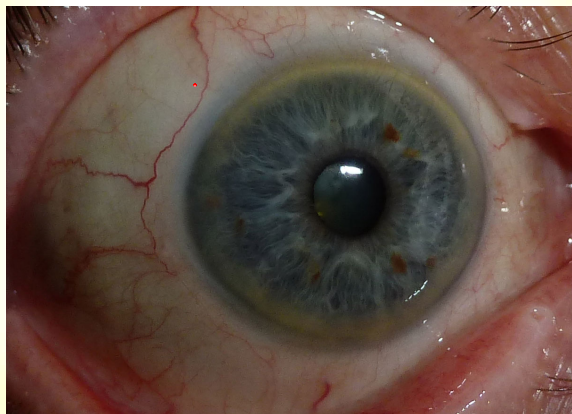
MarysHerbs.com

Infection Pocket



MarysHerbs.com

Infection Pockets



4. Lines Pointing toward Iris

(of various configurations)

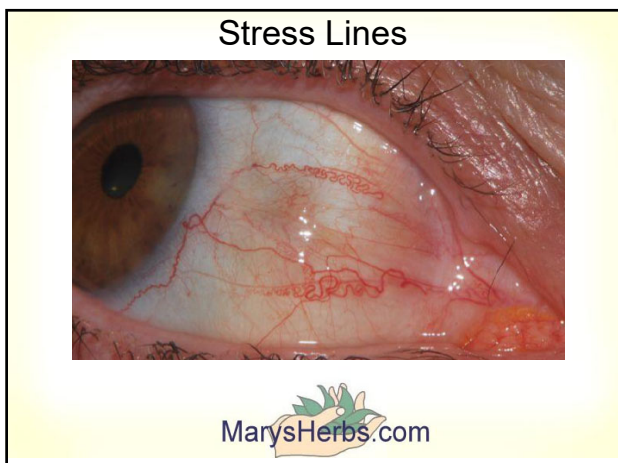
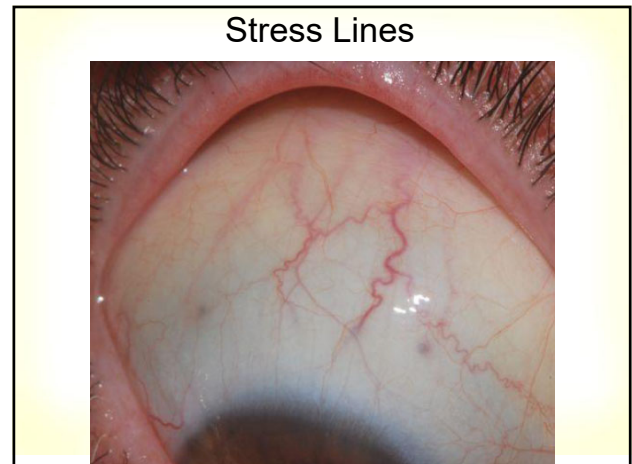
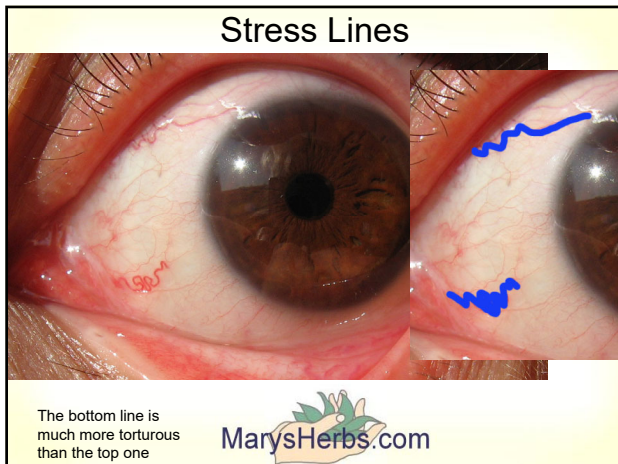
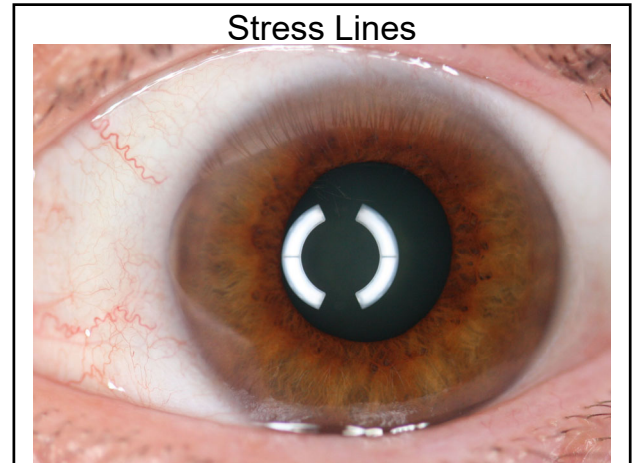
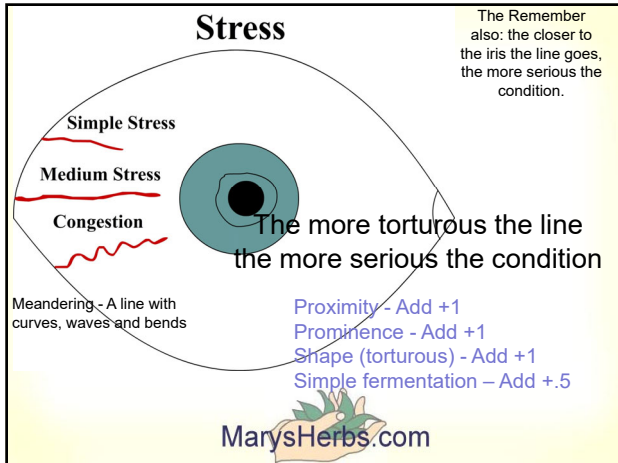
- a. Position
b. Proximity
c. Prominence

Shows in either eye and positions

d. Shape

- Fermentation
- Infection Pocket
- Toxic Lines
- Allergy Net
- Abnormal Tissue
- Blood Pressure Loop
- Encapsulation
- Healing Hook
- Healing Lines
- Sawtooth

MarysHerbs.com



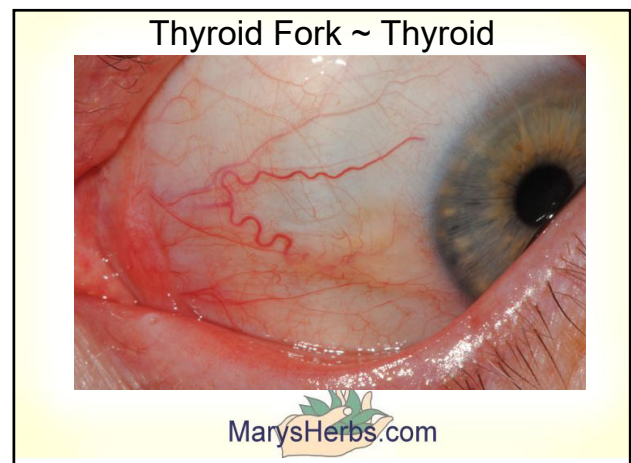
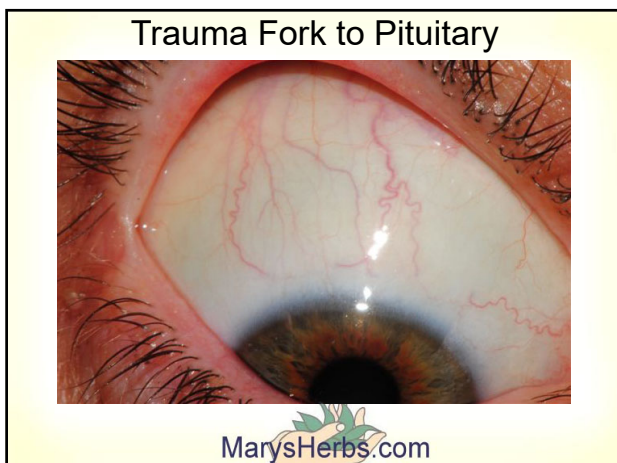
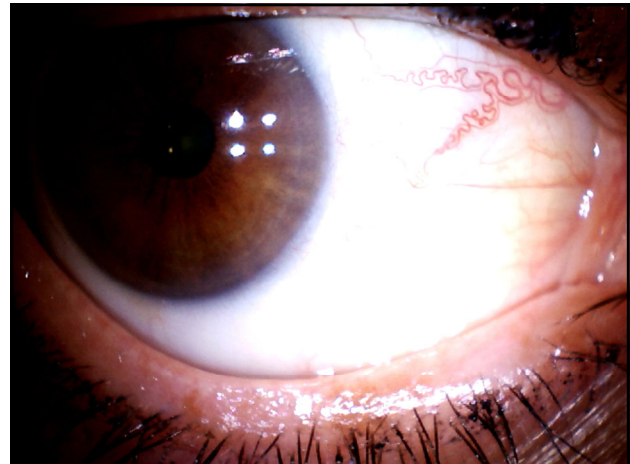
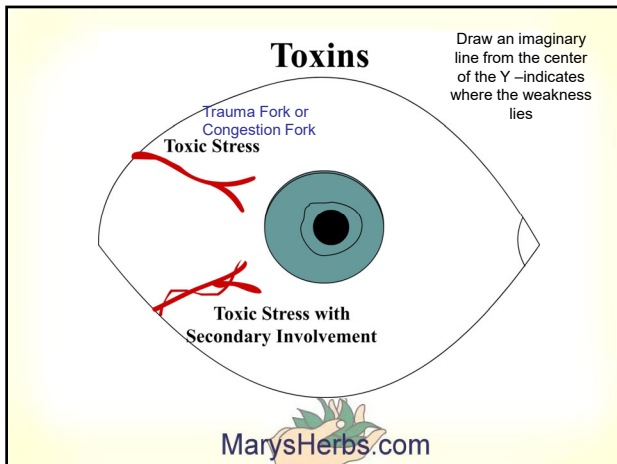
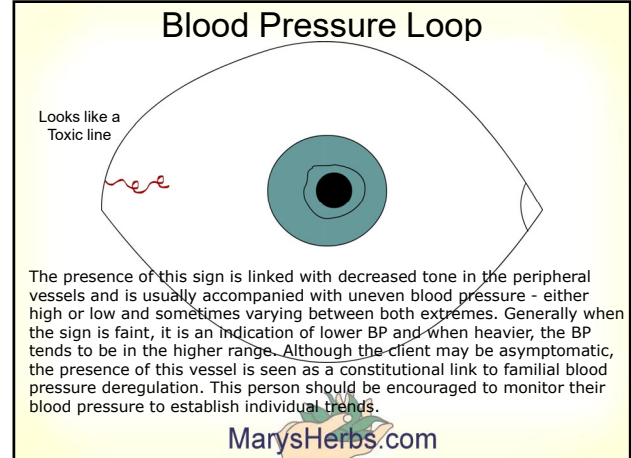
4. Lines Pointing toward Iris

(of various configurations)

- a. Position
 - b. Proximity
 - c. Prominence
- Shows in either eye and positions

d. Shape

- Fermentation
- Infection Pocket
- Toxic Lines
- Allergy Net
- Abnormal Tissue
- Blood Pressure Loop
- Encapsulation
- Healing Hook
- Healing Lines
- Saw tooth



Pointing Toward Liver



MarysHerbs.com

Pointing towards Shoulder



Pointing Towards Thyroid



4. Lines Pointing toward Iris

(of various configurations)

- a. Position
b. Proximity
c. Prominence

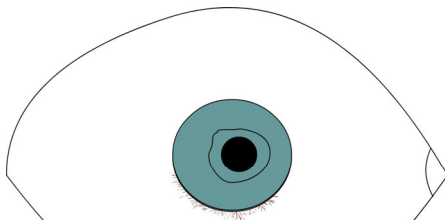
Shows in either eye and positions

d. Shape

- Fermentation
- Infection Pocket
- Toxic Lines
- Allergy Net
- Abnormal Tissue
- Blood Pressure Loop
- Encapsulation
- Healing Hook
- Healing Lines
- Saw tooth

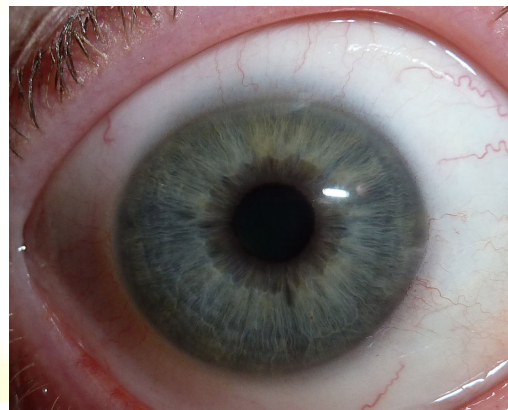
MarysHerbs.com

Allergy Net ~ Fine Lines Around the Iris



MarysHerbs.com

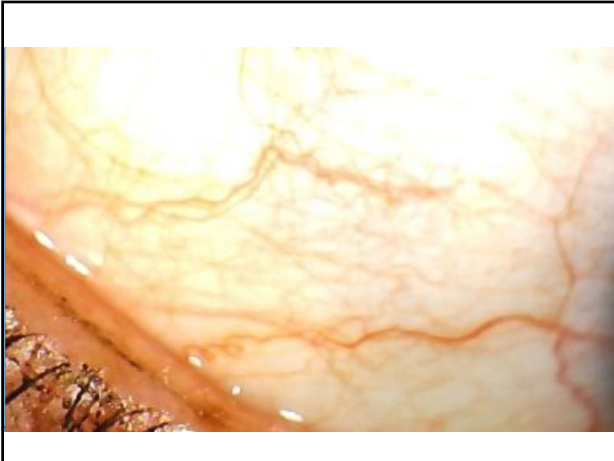
Allergy Net



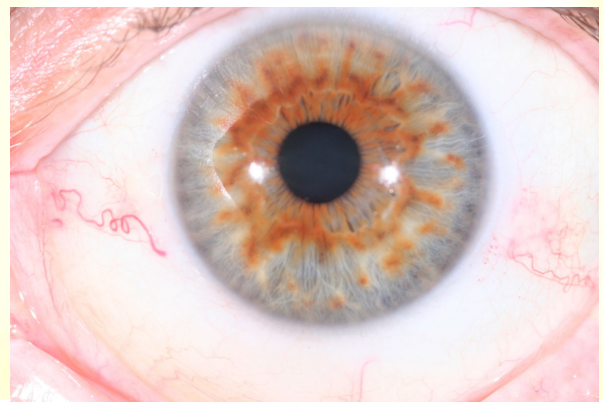
Allergy Net



Allergy Net



Blood Pressure Loop



4. Lines Pointing toward Iris

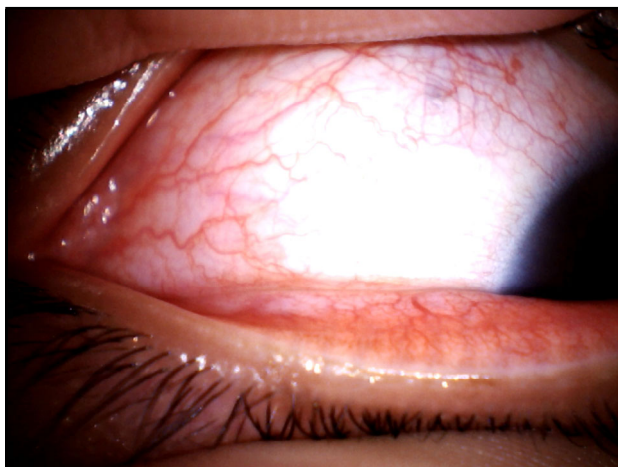
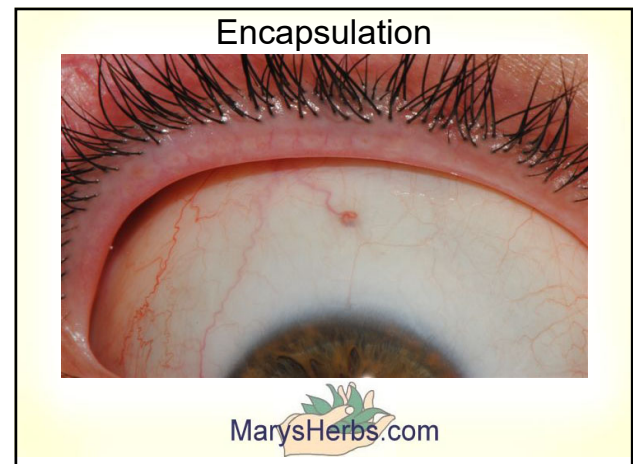
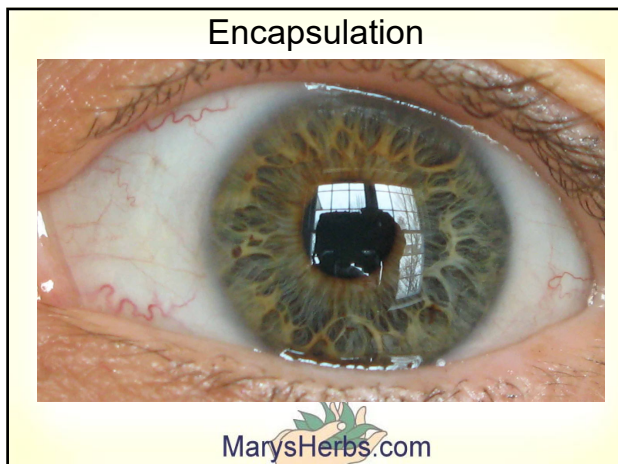
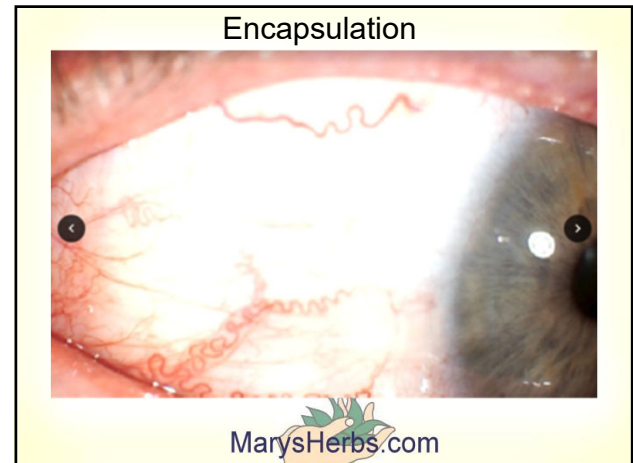
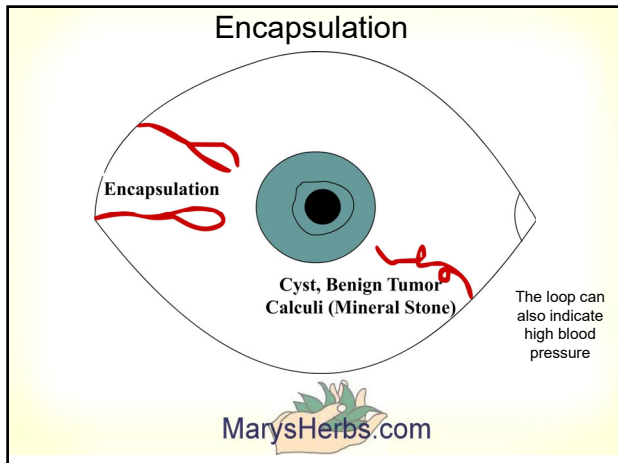
(of various configurations)

- a. Position
 - b. Proximity
 - c. Prominence
- Shows in either eye and positions

d. Shape

- Fermentation
- Infection Pocket
- Toxic Lines
- Allergy Net
- Abnormal Tissue
- Blood Pressure Loop
- Encapsulation
- Healing Hook
- Healing Lines
- Saw tooth

MarysHerbs.com



4. Lines Pointing toward Iris

(of various configurations)

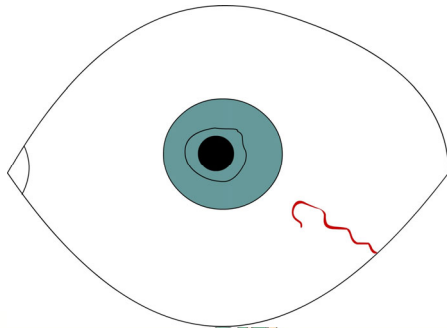
- a. Position
b. Proximity
c. Prominence
- Shows in either eye and positions

d. Shape

- Fermentation
- Infection Pocket
- Toxic Lines
- Allergy Net
- Abnormal Tissue
- Blood Pressure Loop
- Encapsulation
- Healing Hook
- Healing Lines
- Sawtooth

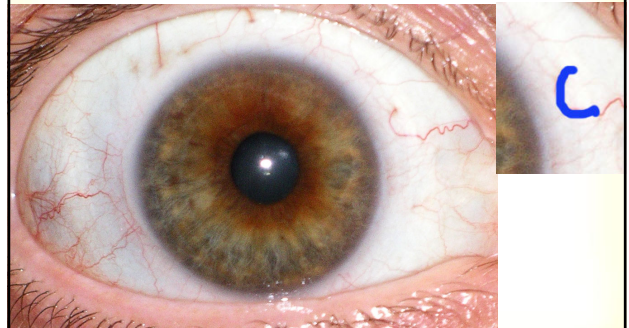
MarysHerbs.com

Healing Lines



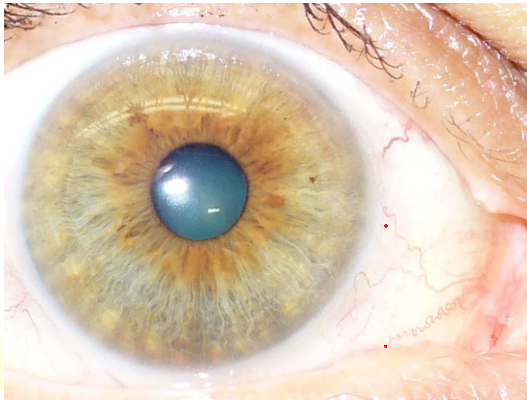
MarysHerbs.com

Healing Hook ?

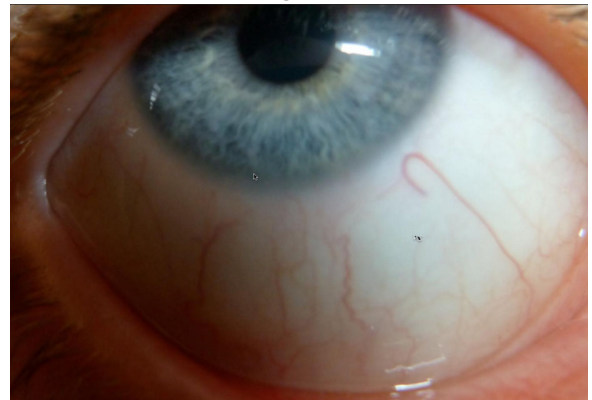


MarysHerbs.com

Healing Hook?



Healing Hook?



4. Lines Pointing toward Iris

(of various configurations)

- a. Position
b. Proximity
c. Prominence

Shows in either eye and positions

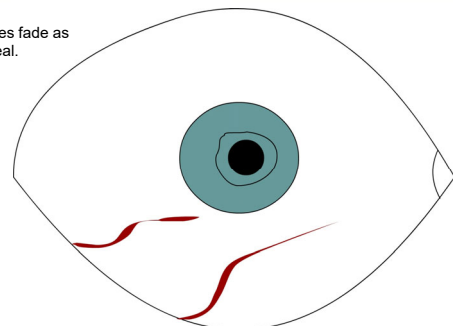
d. Shape

- Fermentation
- Infection Pocket
- Toxic Lines
- Allergy Net
- Abnormal Tissue
- Blood Pressure Loop
- Encapsulation
- Healing Hook
- Healing Lines
- Saw tooth

MarysHerbs.com

Healing Lines

The lines fade as they heal.



MarysHerbs.com

Healing Lines



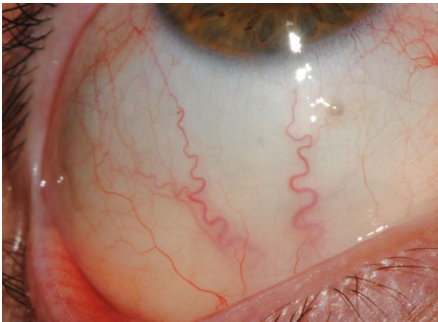
MarysHerbs.com

Healing Lines



MarysHerbs.com

Healing Lines ~ Autonomic Nervous System



MarysHerbs.com

4. Lines Pointing toward Iris

(of various configurations)

- a. Position
- b. Proximity
- c. Prominence

Shows in either eye and positions

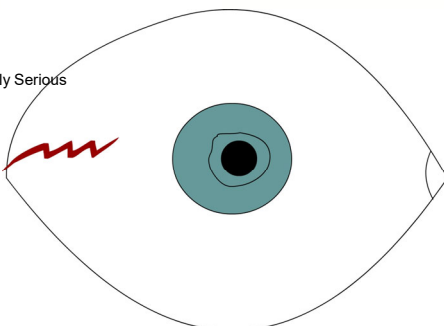
d. Shape

- Fermentation
- Infection Pocket
- Toxic Lines
- Allergy Net
- Abnormal Tissue
- Blood Pressure Loop
- Encapsulation
- Healing Hook
- Healing Lines
- Saw tooth

MarysHerbs.com

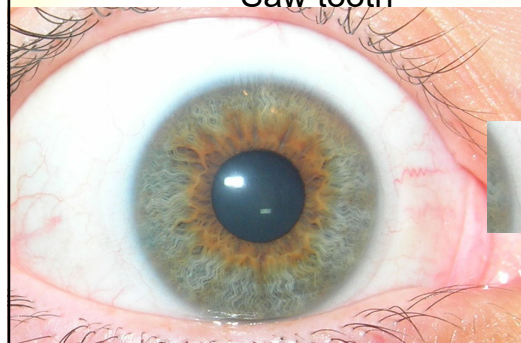
Saw tooth

Extremely Serious

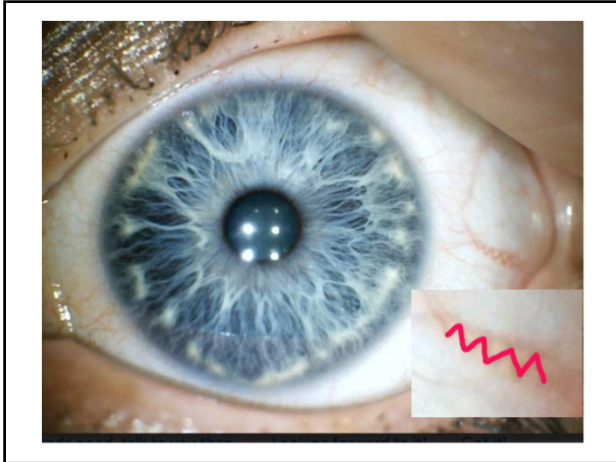


MarysHerbs.com

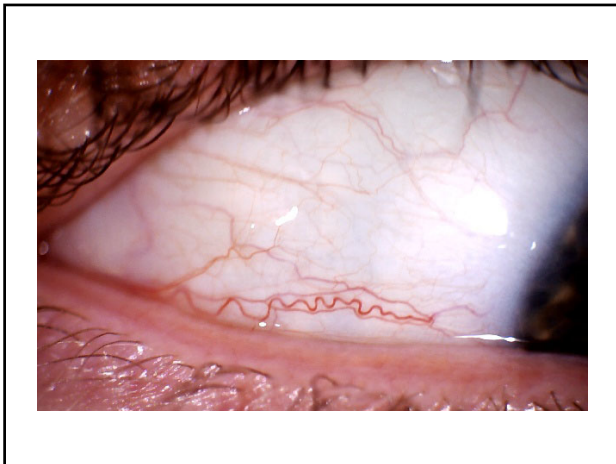
Saw tooth



MarysHerbs.com



Saw Tooth to Pancreas



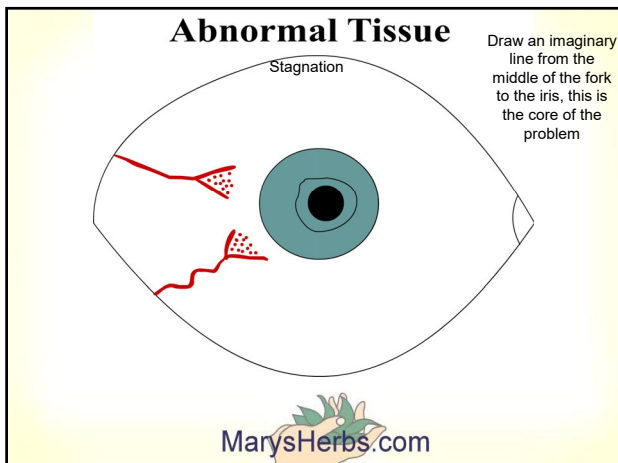
4. Lines Pointing toward Iris (of various configurations)

- a. Position
b. Proximity
c. Prominence
- Shows in either eye and positions

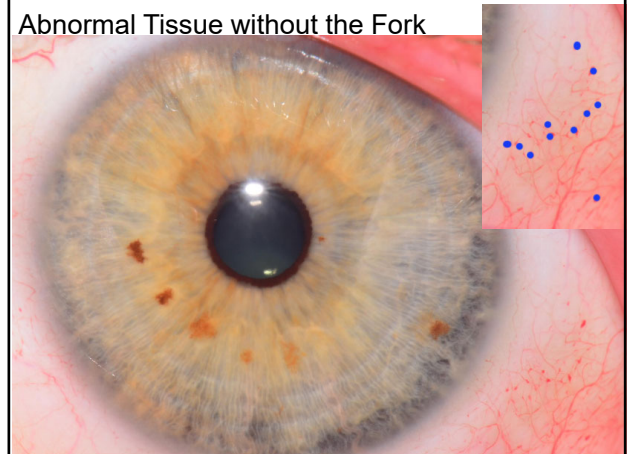
d. Shape

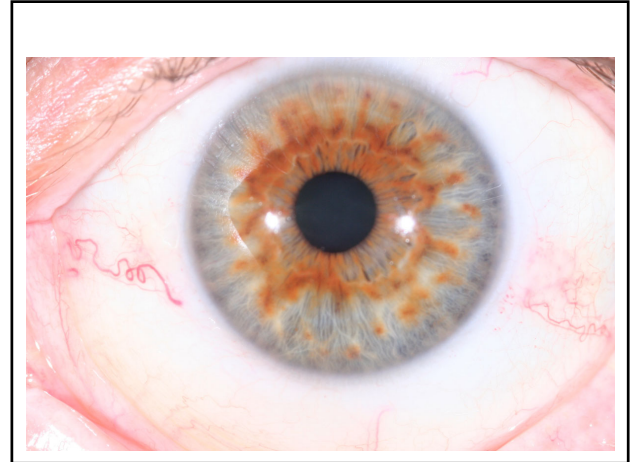
- Fermentation
- Infection Pocket
- Toxic Lines
- Allergy Net
- Abnormal Tissue
- Blood Pressure Loop
- Encapsulation
- Healing Hook
- Healing Lines
- Sawtooth

MarysHerbs.com



Abnormal Tissue without the Fork



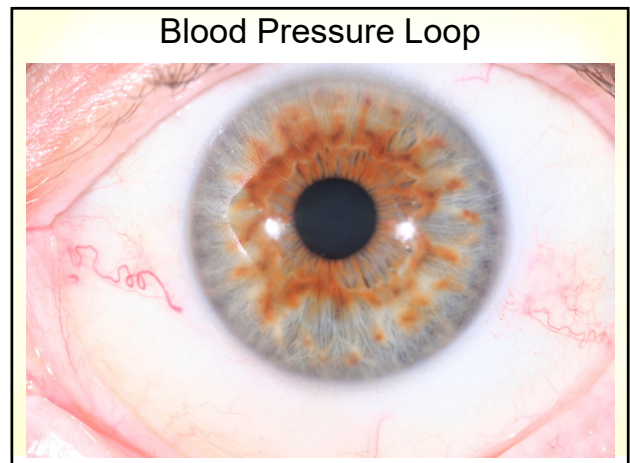
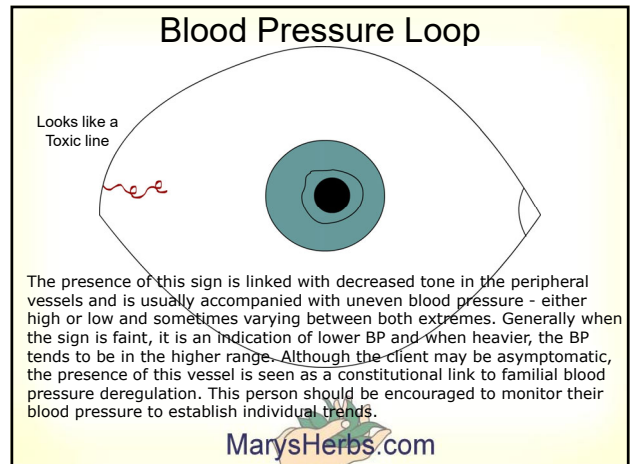


4. Lines Pointing toward Iris (of various configurations)

- a. Position
b. Proximity
c. Prominence
- Shows in either eye and positions

d. Shape

- Fermentation
- Infection Pocket
- Toxic Lines
- Allergy Net
- Abnormal Tissue
- Blood Pressure Loop
- Encapsulation
- Healing Hook
- Healing Lines
- Saw tooth





4. Lines Pointing toward Iris

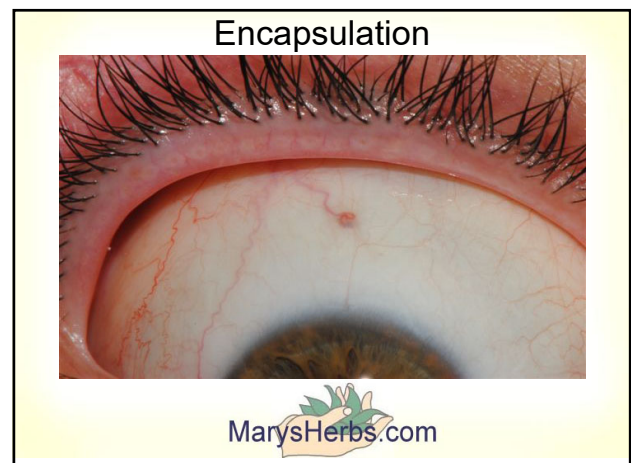
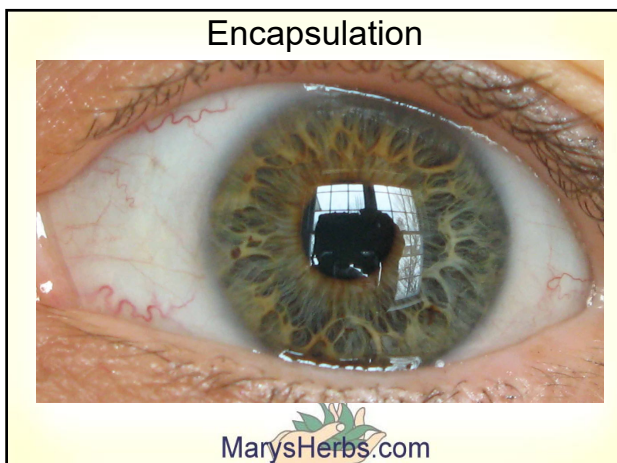
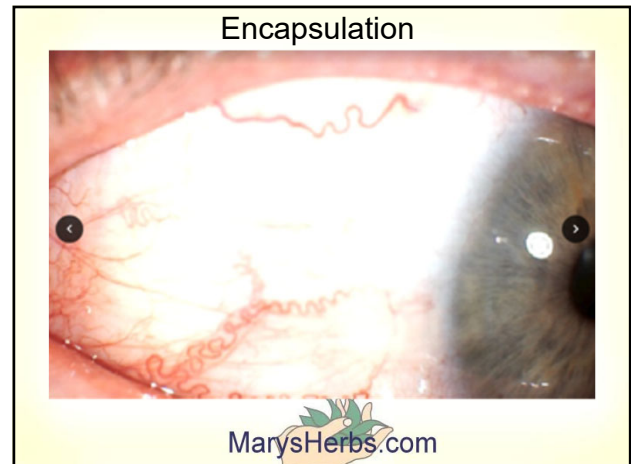
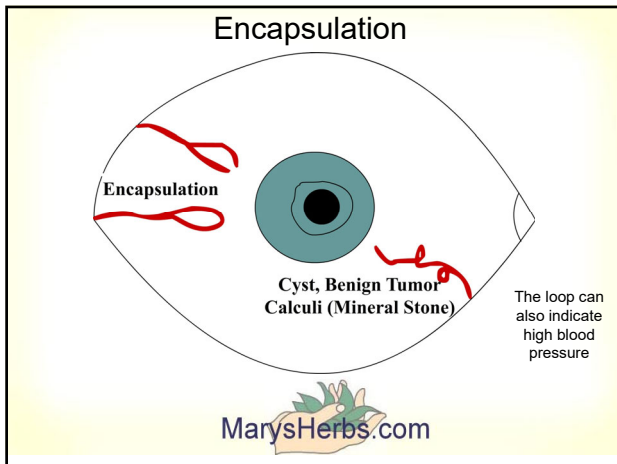
(of various configurations)

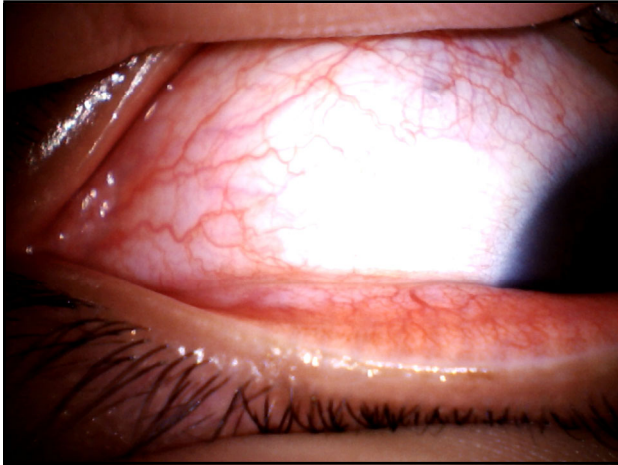
- a. Position
 - b. Proximity
 - c. Prominence
- Shows in either eye and positions

d. Shape

- Fermentation
- Infection Pocket
- Toxic Lines
- Allergy Net
- Abnormal Tissue
- Blood Pressure Loop
- Encapsulation
- Healing Hook
- Healing Lines
- Saw tooth

MarysHerbs.com





4. Lines Pointing toward Iris

(of various configurations)

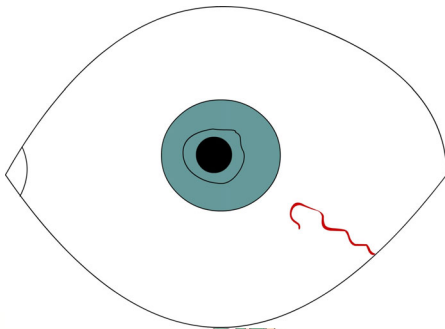
- a. Position
 - b. Proximity
 - c. Prominence
- Shows in either eye and positions

d. Shape

- Fermentation
- Infection Pocket
- Toxic Lines
- Allergy Net
- Abnormal Tissue
- Blood Pressure Loop
- Encapsulation
- Healing Hook
- Healing Lines
- Sawtooth

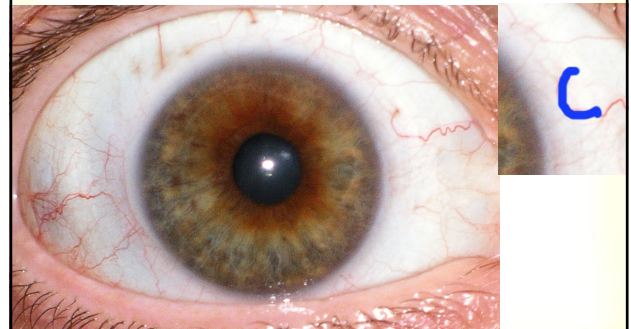
MarysHerbs.com

Healing Lines



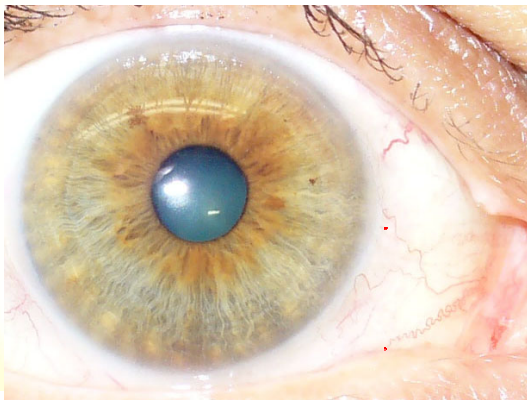
MarysHerbs.com

Healing Hook ?



MarysHerbs.com

Healing Hook?



Healing Hook?



4. Lines Pointing toward Iris

(of various configurations)

- a. Position
 - b. Proximity
 - c. Prominence
- Shows in either eye and positions

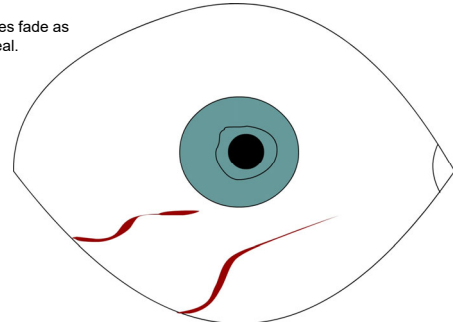
d. Shape

- Fermentation
- Infection Pocket
- Toxic Lines
- Allergy Net
- Abnormal Tissue
- Blood Pressure Loop
- Encapsulation
- Healing Hook
- Healing Lines
- Saw tooth

MarysHerbs.com

Healing Lines

The lines fade as they heal.



MarysHerbs.com

Healing Lines



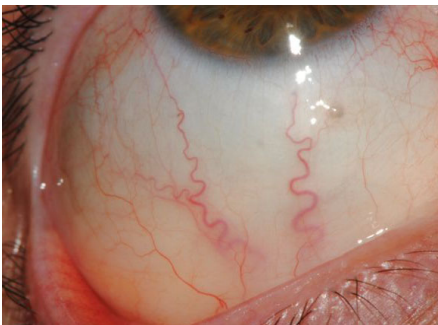
MarysHerbs.com

Healing Lines



MarysHerbs.com

Healing Lines ~ Autonomic Nervous System



MarysHerbs.com

4. Lines Pointing toward Iris

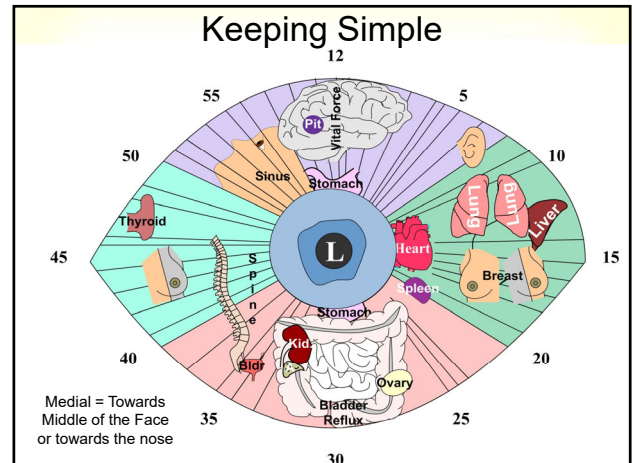
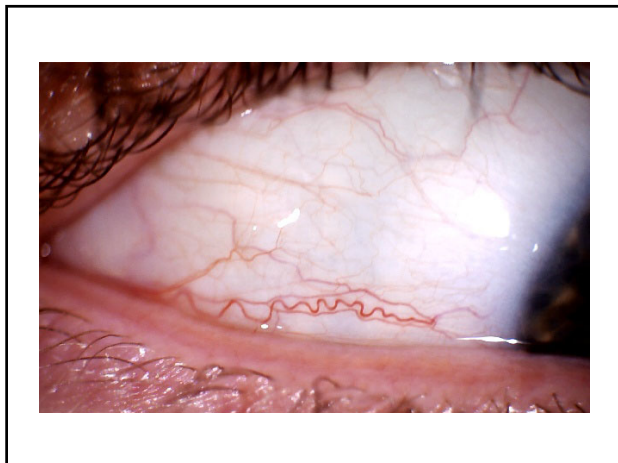
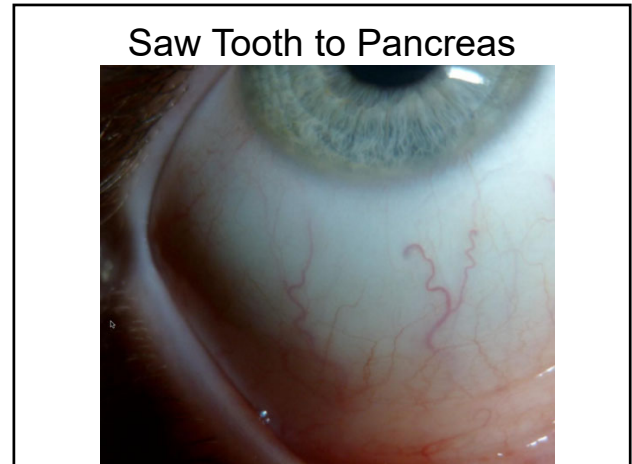
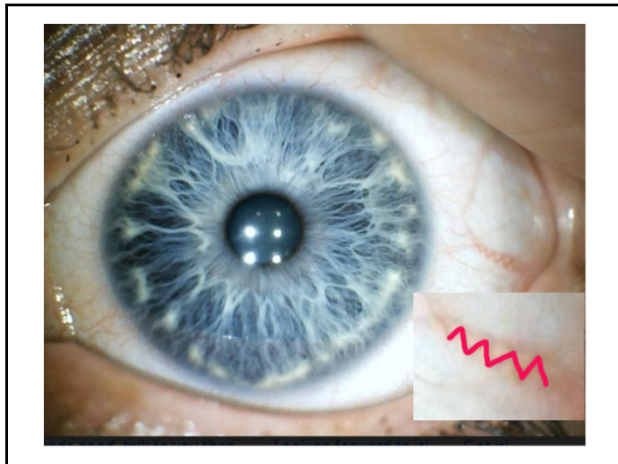
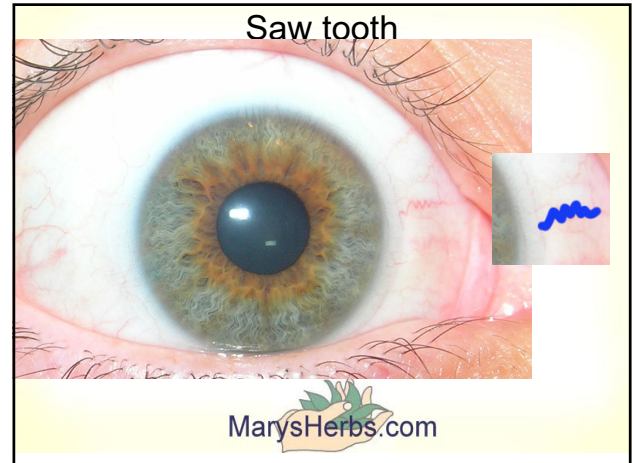
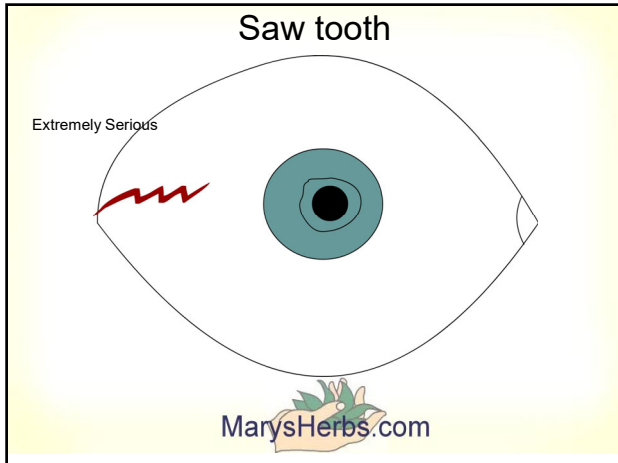
(of various configurations)

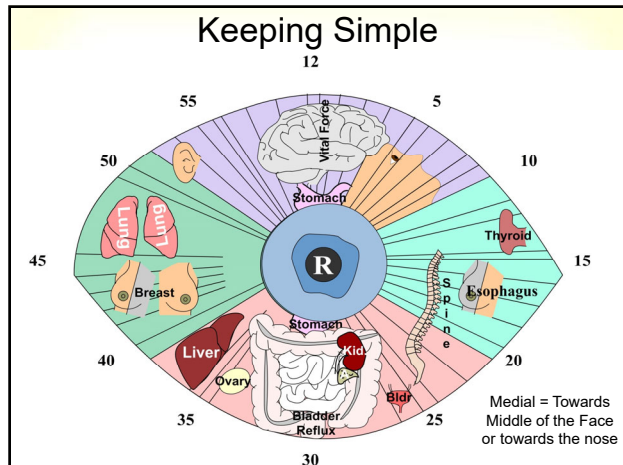
- a. Position
 - b. Proximity
 - c. Prominence
- Shows in either eye and positions

d. Shape

- Fermentation
- Infection Pocket
- Toxic Lines
- Allergy Net
- Abnormal Tissue
- Blood Pressure Loop
- Encapsulation
- Healing Hook
- Healing Lines
- Saw tooth

MarysHerbs.com





Mary Reed Gates
MarysHerbs1@gmail.com
 717-898-2220
 NSP Sponsor # 10139
PERSON WHO INVITED YOU

To be put on our emailing list go to:
<http://www.naturesherbs.biz/>

Mention this webinar & get \$10 off consultation

Questions

facebook

Mary Paranch Reed Gates
 Edit Profile

GROUPS

Natural Health Professi...

<https://www.facebook.com/groups/NaturalHealthProfessionals>

IHPA
 International Holistic Practitioner's Association

CERTIFICATE OF ATTENDANCE

This certifies that

Mary L Reed Gates

has completed the

COURSE IN COMPREHENSIVE IRIDOLGY™ LEVEL I and II

on 5/8/2025

and having completed the prescribed course of study is hereby recognized as a candidate for professional certification. In testimony to this recognition, the Institute's executive committee hereby

Disclaimer

This webinar is not to be used instead of going to a competent doctor. I do not directly nor indirectly dispense medical advice nor prescribe in any way alternative treatment.

In the event you use this information, which is only of historical value, you are prescribing for yourself which is still your constitutional right. I assume no responsibility.

I am independent in my attempt to educate the public. Although I do endorse some top quality products, I receive no financial support from any health or herb company for producing and sharing this information.

I also believe it is a crime that we have to pussy foot around the truth because there is a law that says that I cannot declare what changing your lifestyle and diet can do for your health, but I love this great country and will do my best to try to obey their law, even if I strongly disagree with them..

Natural health works slowly. I suggest that you do not stop medication without guidance of a doctor. I say this not only because it is the law, but because I BELIEVE STOPPING MEDICATION WITHOUT THE GUIDANCE OF A DOCTOR IS UNWISE AND DANGEROUS.

If you would like to make healthier changes in my diet and my doctor was not willing to help you while you work with a natural health practitioner, I suggest you find a doctor who values and respects his patient's rights and fire the doctor who would not!

MarysHerbs.com